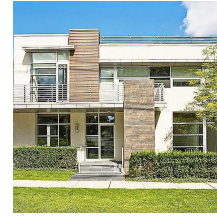


Lorraine Maita, MD 64 River Road, 1st Floor; Summit, NJ 07901 (973) 218-1199

Directions to Summit Office

It is at the corner of Lewis Street and River Road between Equinox and Raceway Gas Station. The driveway is VERY narrow and easily missed. If coming from 24 west, it is next to the Equinox exit has do not enter signs, it is the next narrow driveway). If no parking, you can park in Equinox.



Exit 7B is River Road/Summit DO NOT Take exit to Chatham 124

From Route 78 Westbound: Continue to Exit 48, Route 24 West. **Exit 7A-B then 7B to River Road Summit...*****

From Route 78 Eastbound: Go to Route 24 East; Get off at first exit (#48, on left) marked "Millburn/Route 24 West". Continue on Route 24 West **Exit 7A-B then 7B to River Road Summit...*****

From Newark Airport: Take Route 78 West approximately 5 miles to Exit 48, Route 24 West. **Exit 7A-B then 7B to River Road Summit...*****

From NJ Turnpike: Take Exit 14. Continue on Route 78 West approximately 5 miles to Exit 48, Route 24 West. **Exit 7A-B then 7B to River Road Summit...*****

From the Garden State Parkway Southbound: Take Exit 142 to Route 78 West, continue to Exit 48, Route 24 West. **Exit 7A-B then 7B to River Road Summit...*****

From the Garden State Parkway Northbound: Take Exit 142 to Route 78 East. Take first exit, marked "Hillside/Route 78 West". Take Route 78 West and continue to Exit 48, Route 24 West. **Exit 7A-B then 7B to River Road Summit...*****

From Route 287 (North or South): Take Exit 37, Route 24 East. Continue to Exit 7 Summit/Livingston, follow signs for JFK Parkway and The Mall at Short Hills. Continue past the Short Hills Mall and JFK Parkway becomes River Road. Look for sign that says Equinox, The driveway is next to the Equinox exit driveway and is very narrow and easily missed.

From Manhattan: Lincoln or Holland to NJ Turnpike (South) to Exit 14. Continue on Route 78 West approximately 5 miles to Exit 48, Route 24 West. **Exit 7A-B then 7B to River Road Summit...*****